



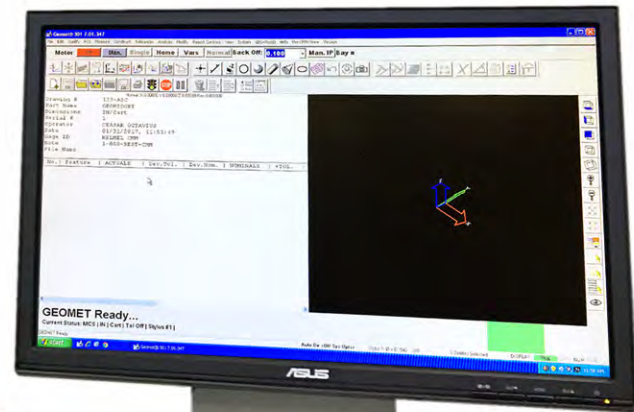
# **EXTREME VALUE Package** **Universal Benchtop Manual** **CMM Package - from Helmel of course!**

**Utterly Handy, Rugged and Accurate Manual CMM with  
Travel Range of 16" x 20" x 14" (400mm x 500mm x 350mm)**

**INCLUDES:**

- TP-ES Fixed Vertical Probe Head with Starter Stylus Kit
- Hemel's Powerful Geomet 101 Software & PC System
- Locks and Fine Adjustment in All Axes
- All Mechanical Bearings - no compressed air needed
- Certified Calibration Sphere and Training Widget
- Full Year Warranty and Software Support

**Surprisingly only  
\$19,950.00**



**made in usa**  
by America's CMM Builder







## EXTREME VALUE PACK INCLUDES:



MODEL	TRAVELS			OVERALL		
	X	Y	Z	W	L	H
216-142	16"	20"	14"	29"	35"	45"
(mm)	400	500	350	740	890	1145

### SPECIFICATIONS

Resolution: 0.000020" (0.5µm)  
 Repeatability: 0.00013" (3.3µm)  
 Linear Accuracy: 0.00013"+0.000005"/in.  
 (3.3+L/200)µm, L=mm  
 Performance per ASME B89.4.1a-1998  
 Utility: 12-230V~, 50-60Hz, 15A  
 grounded main power supply

Hemel CMMs have all mechanical bearing motion. There are no air bearings, making a compressed air supply unnecessary. Our CMMs are constructed with Intrinsic Mechanical Accuracy - IMA: They are physically straight, flat, square and parallel with precision derived from the structure.

### TYPICAL OPTIONS

- Rugged Steel Stand with Monitor Shelf, PC Shelf and slide out Keyboard Drawer
- Renishaw MH20i Manually Indexing 2-Axis Probe for 0-90° Elevation and ±180° Rotation for 168 repeatable positions plus interchangeable Stylus Modules
- Extended Stylus Kit
- Clamp Kits with (2) each of 4" or 8" tall posts with clamping arms
- InkJet type Printer with Printer Shelf at side of Stand
- Installation and Calibration Check of the Checkmaster at your facility



TP-ES Fixed Vertical Probe with M3-to-M2 Stylus Adapter for the Full Range of M2 Styli.



The Standard M2 Stylus Kit includes 2, 3, 4 and 6 mm Styli, Extensions, a 5-Way Center and Tools.



Hemel's GEOMET 101 Plus Software is installed and tested with the included computer system. This is a proven and powerful 3D CMM software with auto-self-teach programming with graphical guide, and reverse engineering. See User Guide at iGeomet.com. (1) Year Software Service included.



Ø1.0000" Sphere with base for Probe Calibration and traceable Size Documentation.



The Helmel WIDGET Training Part is a tool linked to the User Guide examples. A part Print and CAD file are available.



The Helmel Warranty provides a full (1) Year of protection and includes all system components

**NOTE:** (3) Days of Training at Helmel are required but not included. Contact Sales@Hemel.com or call 1-800-BEST-CMM for details.

